

# *Decorate your world*

with wide range of Stainless Steel Designs

**MORE THAN 20 YEARS OF EXPERIENCE**



**[www.mahabalisteel.com](http://www.mahabalisteel.com)**

**A Complete Choice of Stainless Steel Designs**



# Company Profile

**MAHABALI STEEL CENTER IS AN ISO 9001:2015 CERTIFIED COMPANY**

*We grasp the opportunity to introduce M/S Mahabali steel centre as one of the leading stockiest of wide range of stainless steel designer & decorative sheets.*

*Mahabali steel centre was started as a small trading company by Mr. D V Sanghvi in Mumbai who always seized the opportunity & developed a large scale business in domestic which was later joined & expanded by Mr. K D Sanghvi after completing his education from London to represent Mahabali on a global platform.*

*Today Mahabali is one of the leading supplier, exporter & stockiest for decorative & designer sheets based in Mumbai with a wide range of products to select & we also provide customized products as per customer's demands.*

*Mahabali is capable of delivering materials anywhere in the world with an extensive selection of exciting & dynamic finishes on the range of metals that include:-*



## **SUPER MIRROR SHEETS**

*The Finishing looks exactly like mirror with high reflection. It can be applied as decorative material to increase Dimensional appearance.*

## **HAIRLINE FINISH**

*This is a unidirectional Finish but differs from no. 4 Finish. They are straight long lines, and share same usage as many decorative Finishing.*

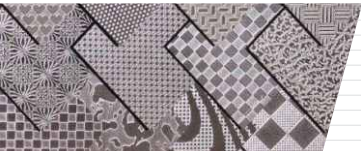


## **STAMPING SHEETS**

*Stamping (pressing) is the process of placing flat sheet metal in either blank or coil form into a stamping press where a tool and die surface forms the metal into a net shape.*

## **BEAD BLAST SHEETS**

*Bead blasted Finishing is very popular in the market by using bead blast technique, high-speed beads strike on both sides of sheets causing evenly dent surface & showing beautiful Finishing.*



## **EMBOSSED SHEETS**

*A raised effect achieved with a projection of up to 4 mm to 5 mm & than if required we can go for TI-PVD to achieve require colour. as its surface is anti-skid & reflective surface widely used in elevator industry & interior projects.*

## **VIBRATION SHEETS**

*Vibration sheets consist of non-directional finishing & high-density scratches on different finishing sheets. Vibration is becoming one of the most popular finishing because of its appearance shows fine texture.*



## **ETCHED SHEETS**

*The materials we stock are not just manufactured through regular-printing screen procedure making etching more accurate & precise. Multi-process etching can increase the depth & graduation of the sheet. Two side etching machine makes the etching deeper up to 0.5 mm.*

## **3D DESIGN SHEETS**

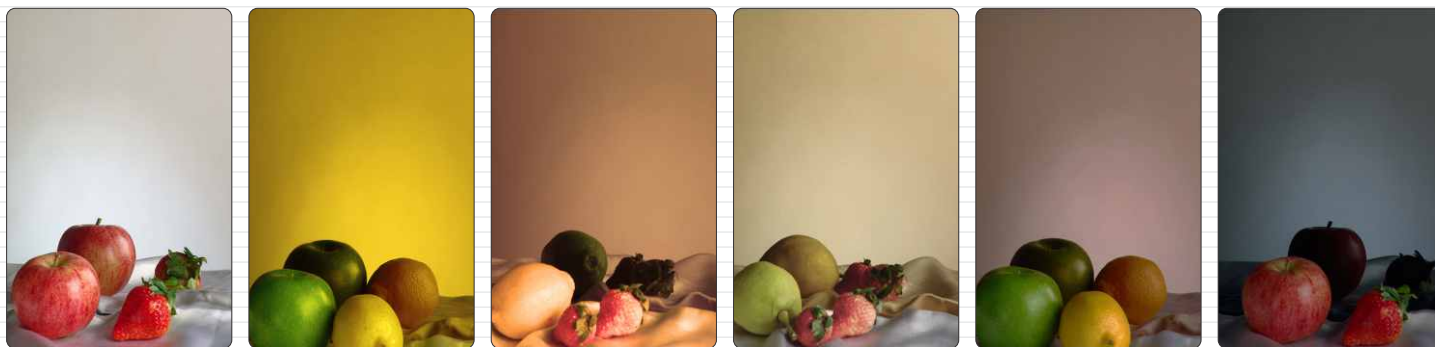
*3d is a multidirectional process which is done by using satin processing technique on mirror surface finishing stainless steel sheet. via different finishing (hairline, etching, bead blast, vibration, pvd), we can provide high reflection of 3d design & the most elegant shape of picture.*



**WE EVEN HAVE WIDE RANGE OF DESIGNER SHEETS EXCLUSIVELY FOR ELEVATORS PURPOSE**

*A wide ranges of patterns is available for your preference. We can provide customized pattern as per your requirement. For range of pattern visit our website & if you require any specific design then we can cater to that too.*

## ***Stainless Steel PVD Coated Sheets (Super Mirror Finish)***



*Silver*

*Gold*

*Rose Gold*

*Champagne*

*Bronze*

*Black*

## ***Stainless Steel PVD Coated Sheets (Hairline Finish)***



*Silver*

*Gold*

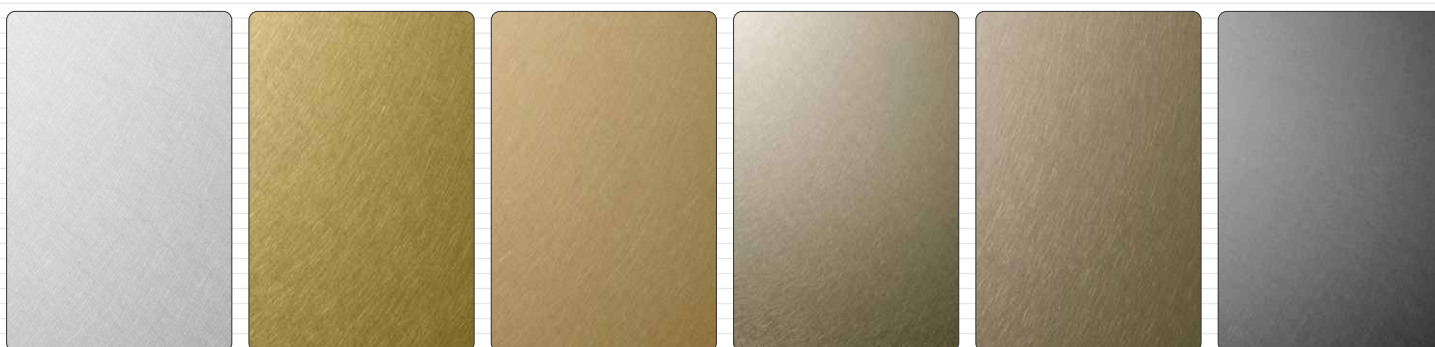
*Rose Gold*

*Champagne*

*Bronze*

*Black*

## ***Stainless Steel PVD Coated Sheets (Vibration)***



*Silver*

*Gold*

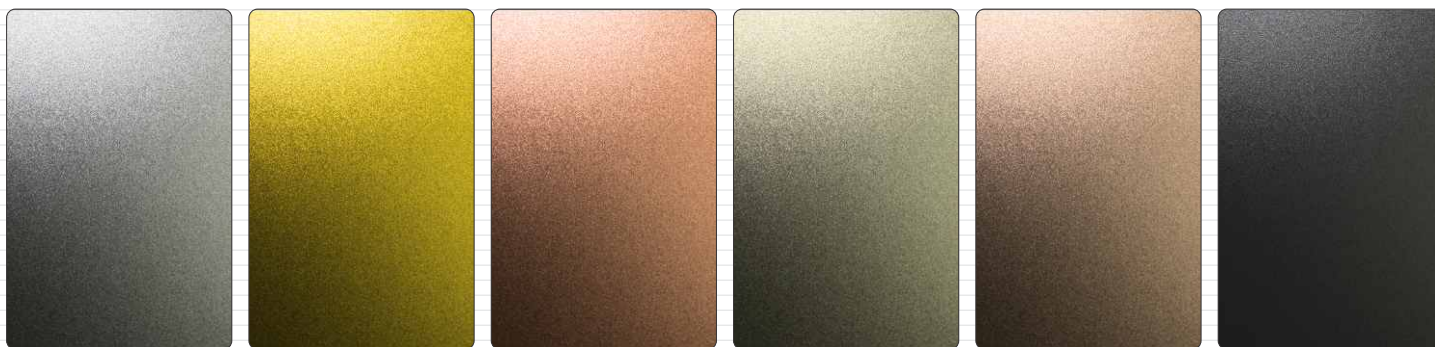
*Rose Gold*

*Champagne*

*Bronze*

*Black*

## ***Stainless Steel PVD Coated Sheets (Bead Blast)***



*Silver*

*Gold*

*Rose Gold*

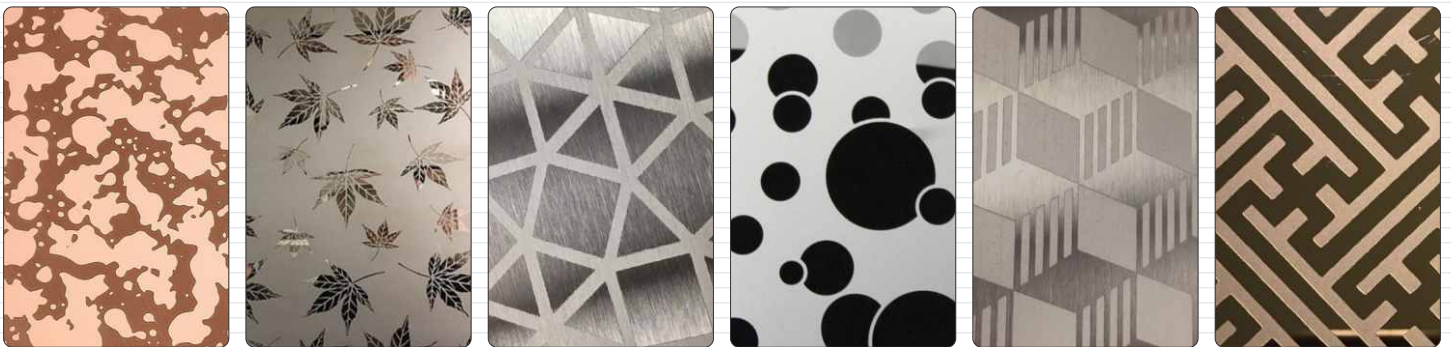
*Champagne*

*Bronze*

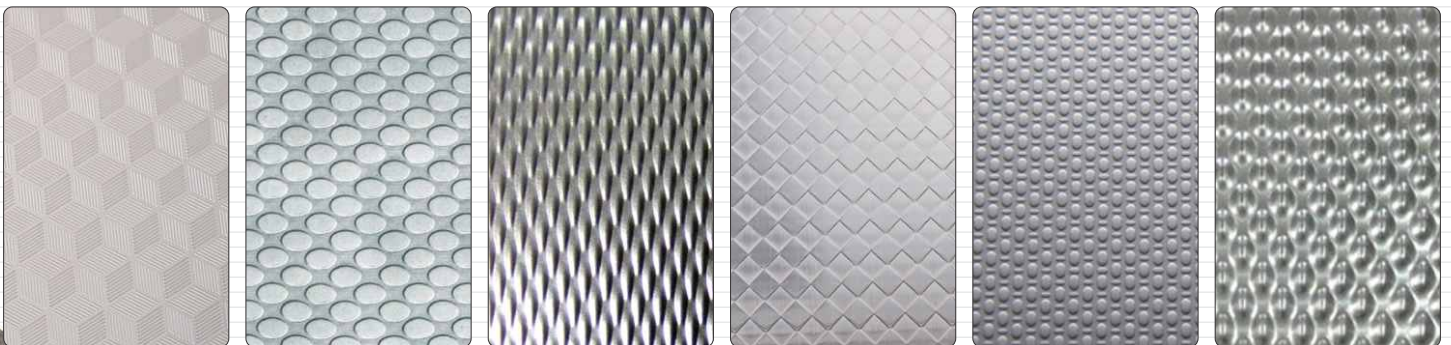
*Black*



## *Stainless Steel Etched Sheets*



## *Stainless Steel Embossed Sheets*

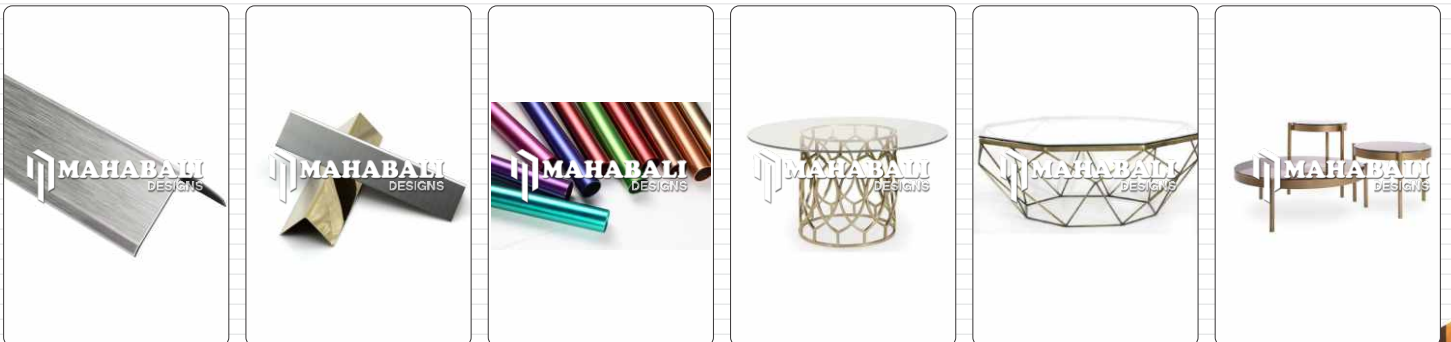




## *Elevator Designer Sheets*



## *Fabricated Items*



## Product benefits

### **Aesthetics   Oil canning**

The patterned finishes provide a large selection of random and symmetrical designs that are modern and attractive in appearance.

Oil canning can be reduced by using the patterned finishes to provide improved optical appearance making the product ideal for cladding systems.

### **Durability   Heat Insulation And Dissipation**

The patterned finishes from Mahabali steel center are tried and tested, having been used for over 40 years because of their anti-vandal and durable properties.

The appliance industry uses the patterned finishes because they provide heat insulation and dissipation advantages.

### **Low Friction Services   Long Term Cost Savings**

The patterning process provides a reduced contact area so reducing friction problems common in food, drink and photographic machinery. This can be significantly speed up production flow.

As a direct consequence of the strength and durability benefits provided by the patterned finishes, long term cost savings are provided through reduced maintenance and replacement in applications such as elevators, columns, doors etc.

### **Weight Saving   Reflective Surfaces**

The patterning process increases the strength and rigidity of the metal, enabling lighter gauges to be used with consequential cost and weight saving.

The patterned finishes are used in the lighting industry to break up glare.

## Cleaning Methods:

Stainless steel products do not corrode easily, however this does not mean the surface finishes are impervious to pollutants, strong sunlight and weather conditions. Different conditions and environments may have an effect on the finish of stainless steel. Pollution such as exhaust emissions, acids and other pollutants in the air are the major cause of discoloration or 'tea staining', as well as deposits in the air settling in the surface grain of the metal.

To keep a well maintained, long lasting, visually appealing finish you will need to do routine maintenance. If the cleaning and maintenance schedule is not followed your stainless steel can be permanently damaged.

### **ATTENTION:-**

When wiping down, ALWAYS follow the stainless-steel lines or surface direction. You MUST rinse the surface thoroughly when washing is complete so that no washing liquid residue is left on the coloured stainless steel surface.

	<b>PVD.COATED CLEANING METHODS</b>
<b>DO NOT USE</b>	Wire brush, hydrofluoric acid, hydrogen peroxide.
<b>DAILY CLEANING</b>	Wipe gently the surface of the stainless steel sheet, using a fine cotton cloth soaked with either soap water or natural detergent (diluted with 30-40% water).rinse with water & use a fine cotton cloth to dry and absorb excessive water.
<b>ADHESIVE RESIDUE</b>	Apply a small amount of alcohol; clean off then rinse and wipe dry with soft, clean cloth.
<b>RUST-SPOTTING</b>	Use appropriate washing solution to wipe off, rinse with clean water and thoroughly dry with soft clean cloth.
<b>FINGER PRINT CLEANING</b>	It can also be substituted by organic solvent such as acetone or alcohol rinse with water & use a fine cotton cloth to dry and absorb excessive water.
<b>OIL, FAT AND GREASE</b>	Grease or oil marks on the surface can be removed by organic solvent such as acetone or alcohol. Rinse with water & use a fine cotton cloth to dry and absorb excessive water.



## ***Our Products Have A Broad Range of Applications.***

*Our products are used in various applications & wide range of building: elevator, architectural panel, automobile advertising signage, interior decoration, without frames, coloum covers, curtain walls, storefront display & kitchenware and furniture.*

***As far as your imagination, the utilization of our fine products certainly can match your needs.***

- ***Interior***
- ***Exterior***
- ***Kitchen Counters***
- ***Roofing***
- ***Signages***
- ***Laser Cutting***
- ***Artifacts***
- ***Cladding***
- ***Bus Stations***
- ***Metro***
- ***Airports***
- ***Hospitals***
- ***Lobbies***
- ***Stainless Steel Ceiling***
- ***Stainless Steel Wall Panel***
- ***Customized Doors***
- ***Bathroom***
- ***Malls***

## **APPLICATIONS**





## Regd. Office

Email : [sales@mahabalisteel.com](mailto:sales@mahabalisteel.com)

## Warehouse in Mumbai

Plot no. 376,  
Kalamboli Steel Market,  
Kalamboli, District Raigad- 410 218,  
Maharashtra, India.

## Warehouse in Ahmedabad

Gala No. 56, Fortune Industrial Park ,  
Kathwada-Singarva Rd, Odhav GIDC,  
Ahmedabad, Gujarat 382430

**www.mahabalisteel.com**

